

B2 OUTPUTS

Zena Hoctor

HERITAGE MAP VIEWER

One stop shop for landscape, environmental, planning, tourism and heritage information for the Burren

Access to national and county datasets in map form with contextual data from online sources and pdfs



For optimal viewing, we recommend using Internet Explorer or FireFox.

Chrome currently has external issues that may affect your user experience

DUBLIN COUNTY ARCHAEOLOGY



BURREN GEOPARK LIFE



HeritageMaps.ie

An Chomhairle Oidhreachta | The Heritage Council



DUBLIN BAY AREA



EVENTS





Layer List [Close]

Datasets Active (1) Legend

Search Data...

- DESIGNATED PROTECTED SITES
- ARCHAEOLOGY
- ARCHITECTURE
- TOURISM, RECREATION & AMENITY
- INDUSTRIAL, TECHNICAL & CRAFT
- TRANSPORT NETWORKS
- PLANNING
- ADMINISTRATIVE BOUNDARIES
- Burren & Cliffs of Moher Geopark Extent





Layer List - X

Datasets Active (2) Legend

Search Data...

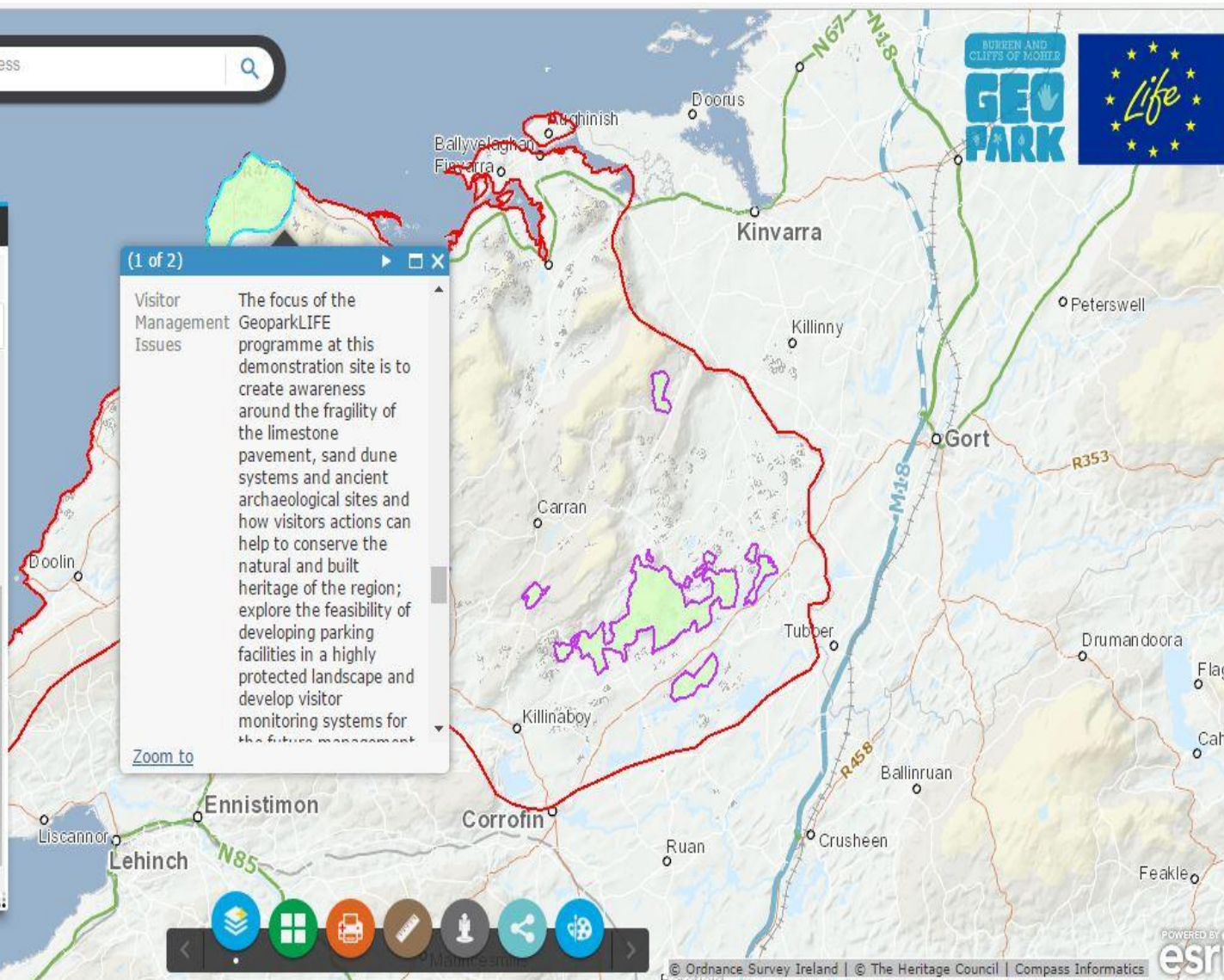
- ARCHAEOLOGY
- ARCHITECTURE
- TOURISM, RECREATION & AMENITY
- INDUSTRIAL, TECHNICAL & CRAFT
- TRANSPORT NETWORKS
- PLANNING
- ADMINISTRATIVE BOUNDARIES
- Burren Geopark LIFE Demonstration Sites
 - Burren Geopark LIFE Demonstration Sites

(1 of 2)

Visitor Management Issues

The focus of the GeoparkLIFE programme at this demonstration site is to create awareness around the fragility of the limestone pavement, sand dune systems and ancient archaeological sites and how visitors actions can help to conserve the natural and built heritage of the region; explore the feasibility of developing parking facilities in a highly protected landscape and develop visitor monitoring systems for the future management

[Zoom to](#)



1 : 200,000
6km



Search Data...

- ⊕ LANDSCAPES ⓘ
- ⊕ GEOLOGY ⓘ
- ⊕ HABITATS ⓘ
- ⊕ SPECIES ⓘ
- ⊕ COASTAL & MARINE ⓘ
- ⊕ HYDROLOGY ⓘ
- ⊕ DESIGNATED PROTECTED SITES ⓘ
- ⊕ ARCHAEOLOGY ⓘ
- ⊕ ARCHITECTURE ⓘ
- ⊕ TOURISM, RECREATION & AMENITY ⓘ
- ⊕ INDUSTRIAL, TECHNICAL & CRAFT ⓘ
- ⊕ TRANSPORT NETWORKS ⓘ
- ⊕ PLANNING ⓘ
- ⊕ ADMINISTRATIVE BOUNDARIES ⓘ



Layer List

Datasets Active (2) Legend

Search Data...

Clare Landscape Categories

- Airports
- Broad Leaved Woodland
- Coastline/Intertidal
- Designed Landscape
- Dunes
- Enclosed Land (1)
- Enclosed Land (2)
- Enclosed Land (3)
- Enclosed Land (4)
- Estuarine/Intertidal
- Extractive Industry
- Recreational
- Rough Ground (1)
- Rough Ground (2)
- Rough Ground (3)
- Settlement (1)
- Settlement (2)



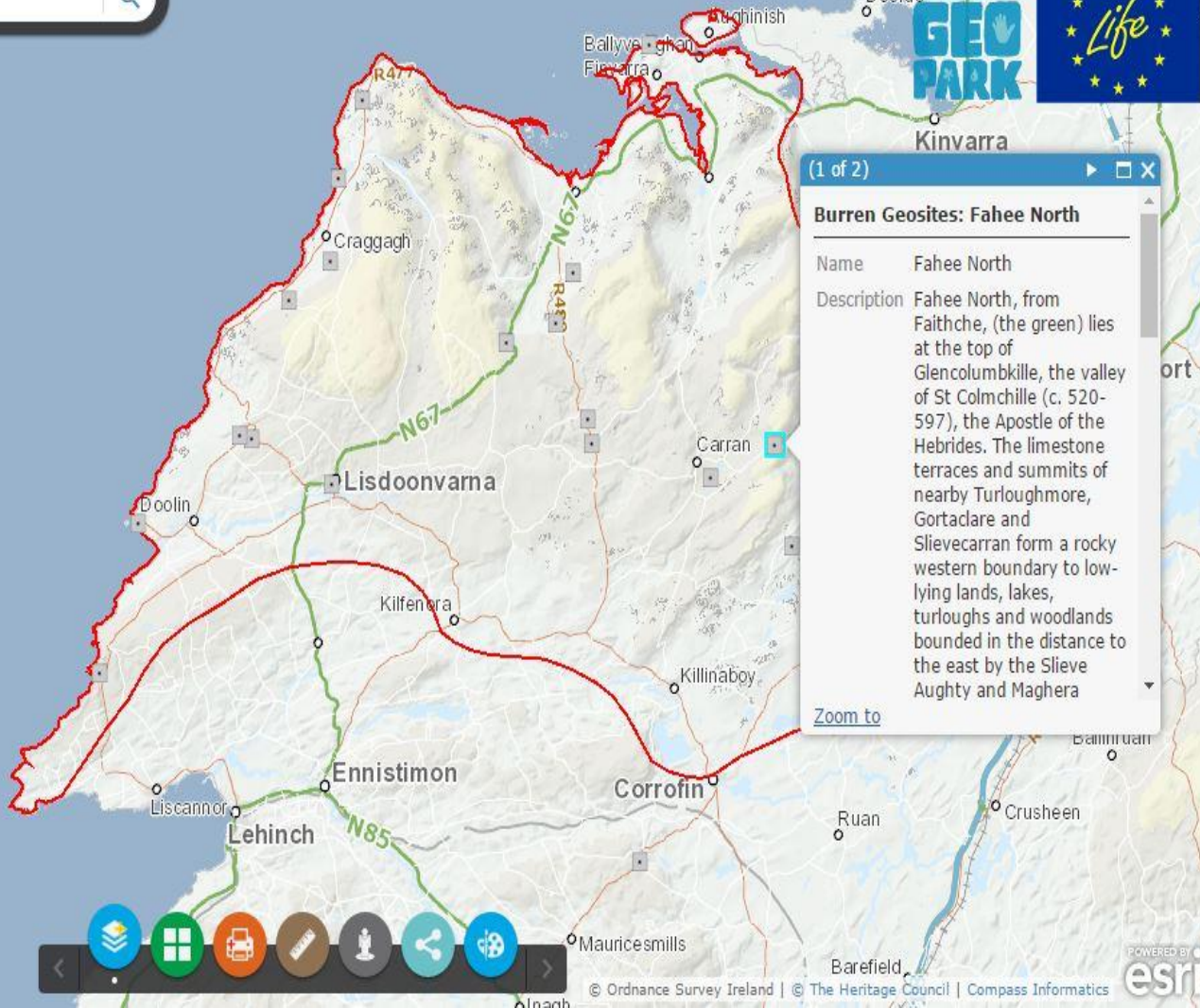


Layer List - X

Datasets Active (2) Legend

Search Data...

- LANDSCAPES
- GEOLOGY**
- Burren Geosites
- Historic Mines
- Karst
- Active Quarries
- Gravels
- Offshore Geology
- Seismic Survey 2D
- Bedrock
- Clare Geological Heritage Sites
- Mineral Localities





Layer List - X

Datasets Active (2) Legend

Search Data...

- Limestone Pavements i
- Turloughs (NPWS) i
- Clare Wetland Survey - Habitats i
- Forestry 2015 i
- Clare Wetland Survey - Spring Sites i
- Clare Wetland Survey - Wetland Locations i
- BirdWatch Ireland - Sensitivity for Wind Energy i
- National Fen Survey (NPWS) i
- Ancient & Long Established Woodland (NPWS) i
- Galway County Bird Watching i
- Galway County Bird Breeding Sites i
- SPECIES** i



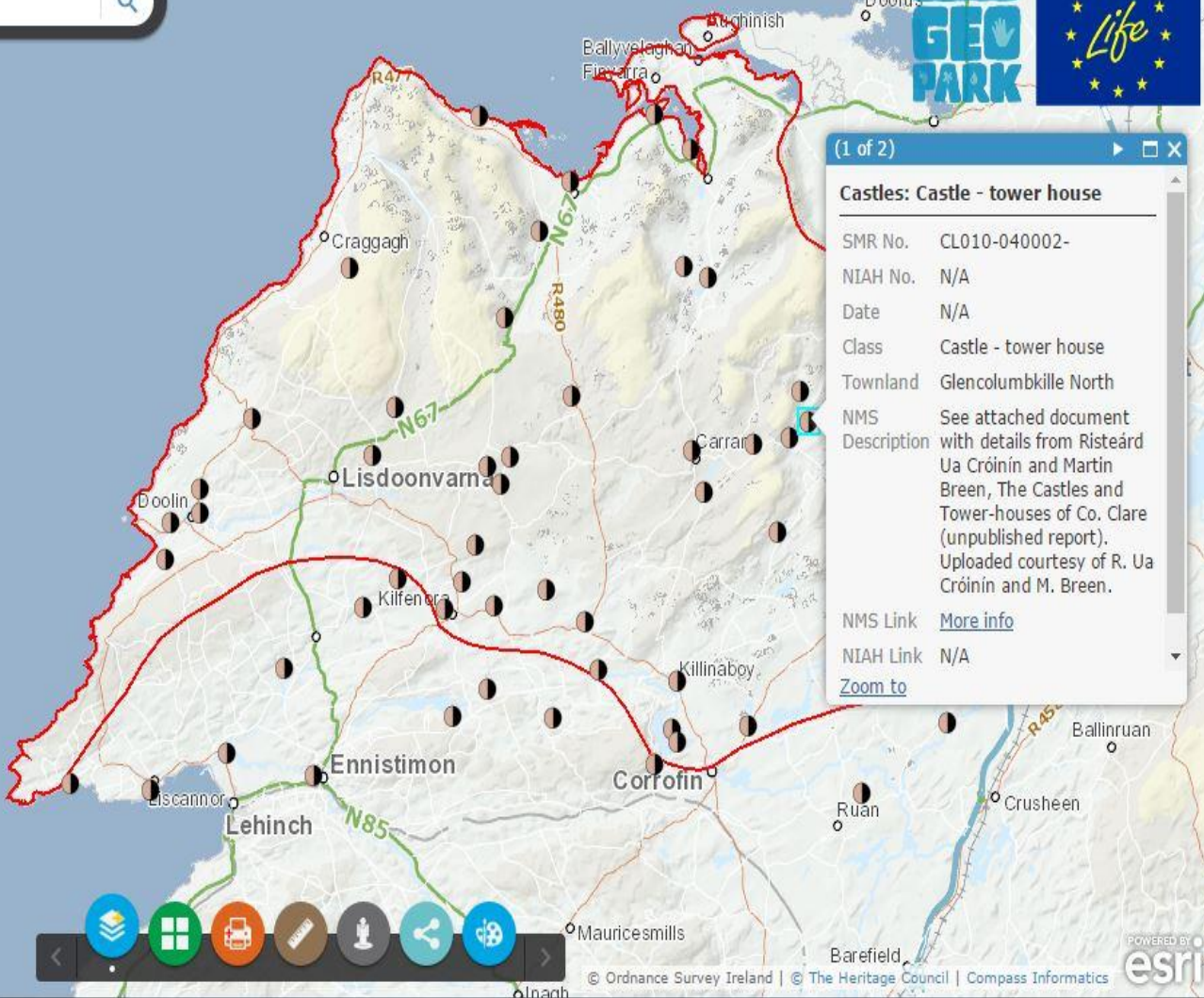


Layer List - X

Datasets Active (2) Legend

Search Data...

- Roads & Trackways
- Industrial Features
- Worked Stone Features
- Castles & Towers**
 - Bawns
 - Castles**
 - Martello Towers
 - Signal Tower
- Earthworks & Enclosures
- Funerary
- Habitation Sites
- Religious & Ritual



(1 of 2)

Castles: Castle - tower house

| | |
|-----------------|--|
| SMR No. | CL010-040002- |
| NIAH No. | N/A |
| Date | N/A |
| Class | Castle - tower house |
| Townland | Glencolumbkille North |
| NMS Description | See attached document with details from Risteárd Ua Cróinín and Martin Breen, The Castles and Tower-houses of Co. Clare (unpublished report). Uploaded courtesy of R. Ua Cróinín and M. Breen. |
| NMS Link | More info |
| NIAH Link | N/A |
| | Zoom to |





Layer List

Datasets Active (6) Legend

Search Data...

- An Taisce Blue Flag Beaches
- Bathing Waters
- Irish Landmark Trust
- Pilgrim Paths
- Burren Heritage Trails
 - Ballyvaughan Heritage Trail
 - Corofin Heritage Trail
 - Dysert O'Dea Heritage Trail
 - Lisdoonvarna Heritage Trail
 - The Flaggy Shore Heritage Trail
- Surf Spots
- Irish Surfing Association Clubs



A navigation toolbar at the bottom of the map interface. It includes icons for home, a grid, print, a ruler, a person, share, and a refresh/reload function.

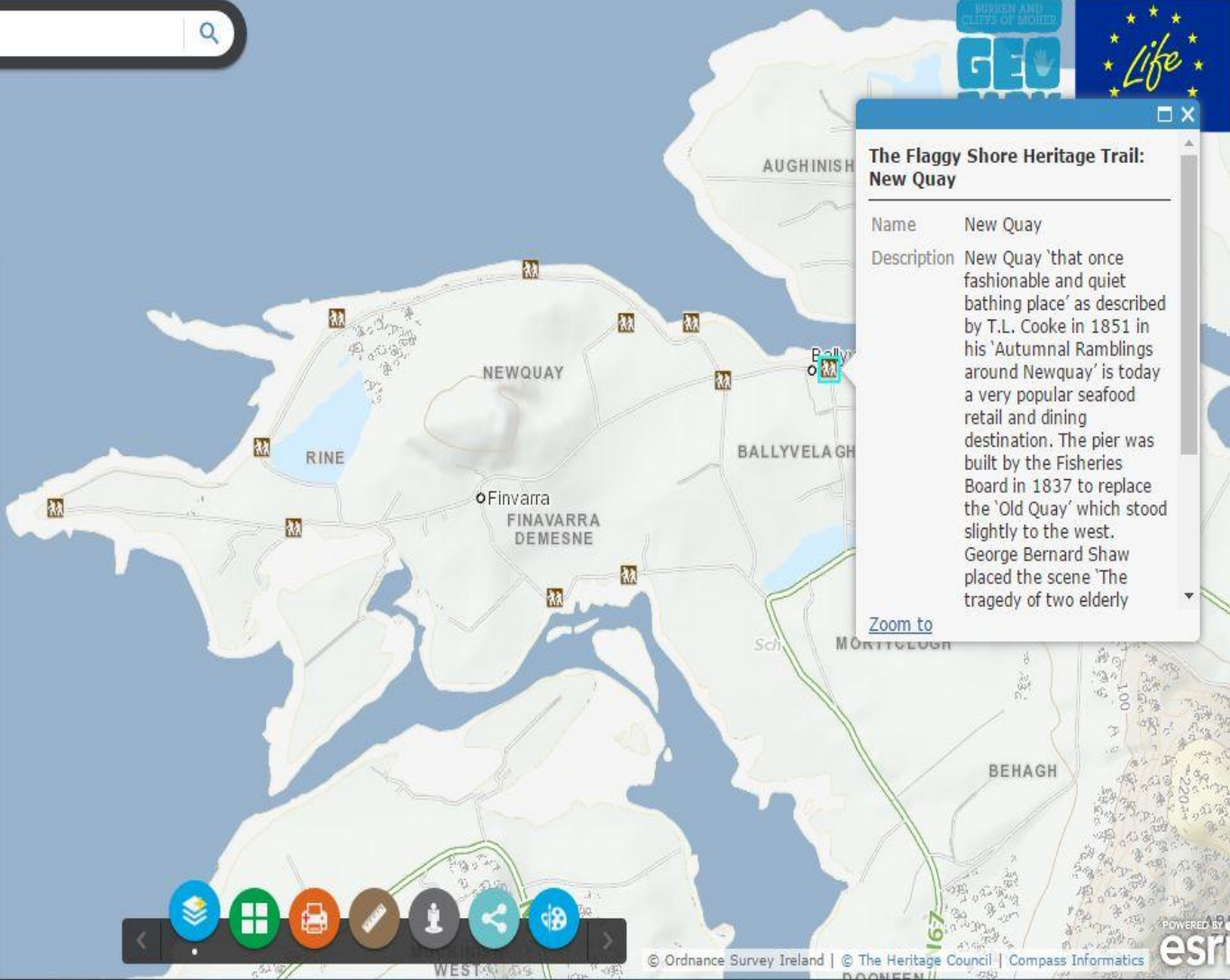


Layer List - X

Datasets Active (1) Legend

Search Data...

- Lisdoonvarna Heritage Trail i
- The Flaggy Shore Heritage Trail i
- Surf Spots i
- Irish Surfing Association Clubs i
- INDUSTRIAL, TECHNICAL & CRAFT i
- TRANSPORT NETWORKS i
- PLANNING i
- ADMINISTRATIVE BOUNDARIES i
- Burren Geopark LIFE Demonstration Sites i



The Flaggy Shore Heritage Trail: New Quay

Name New Quay

Description New Quay 'that once fashionable and quiet bathing place' as described by T.L. Cooke in 1851 in his 'Autumnal Rambles around New Quay' is today a very popular seafood retail and dining destination. The pier was built by the Fisheries Board in 1837 to replace the 'Old Quay' which stood slightly to the west. George Bernard Shaw placed the scene 'The tragedy of two elderly

[Zoom to](#)



A research and tourism tool

- Concentrated local detail as opposed to wider map viewer system
- Continuously updated, accessible and easy-to-use tool
- Identify points of interest
- Study local heritage

A Planning Tool

- Create customise maps with cross disciplinary views
- Assess area and distance



A GeoparkLIFE output

- Demonstration sites information
- Local detail
- User Guide
- Transferable demonstration model for other destinations as an easy-to-use, highly visual data management tool.

HERITAGE SITES MONITORING TOOL

- Amalgamation of methodologies developed for:
 - Baseline data collection
 - Visitor impact studies
 - Visitor survey
 - Monitoring of sites

What will it be used for?

To monitor the changing condition of the built and natural heritage of a site and to determine the impact of visitor behaviour at that site.

The results of this **holistic** monitoring will inform **integrated adaptive** management planning and actions at the site.

How it works

- The app contains three distinct sections:
 - Visitor Behaviour and Impact Observation
 - Changes in Built Heritage Site Condition
 - Changes in Walking Trail Condition

- Holistic approach
- Digital platform
- Transferability